

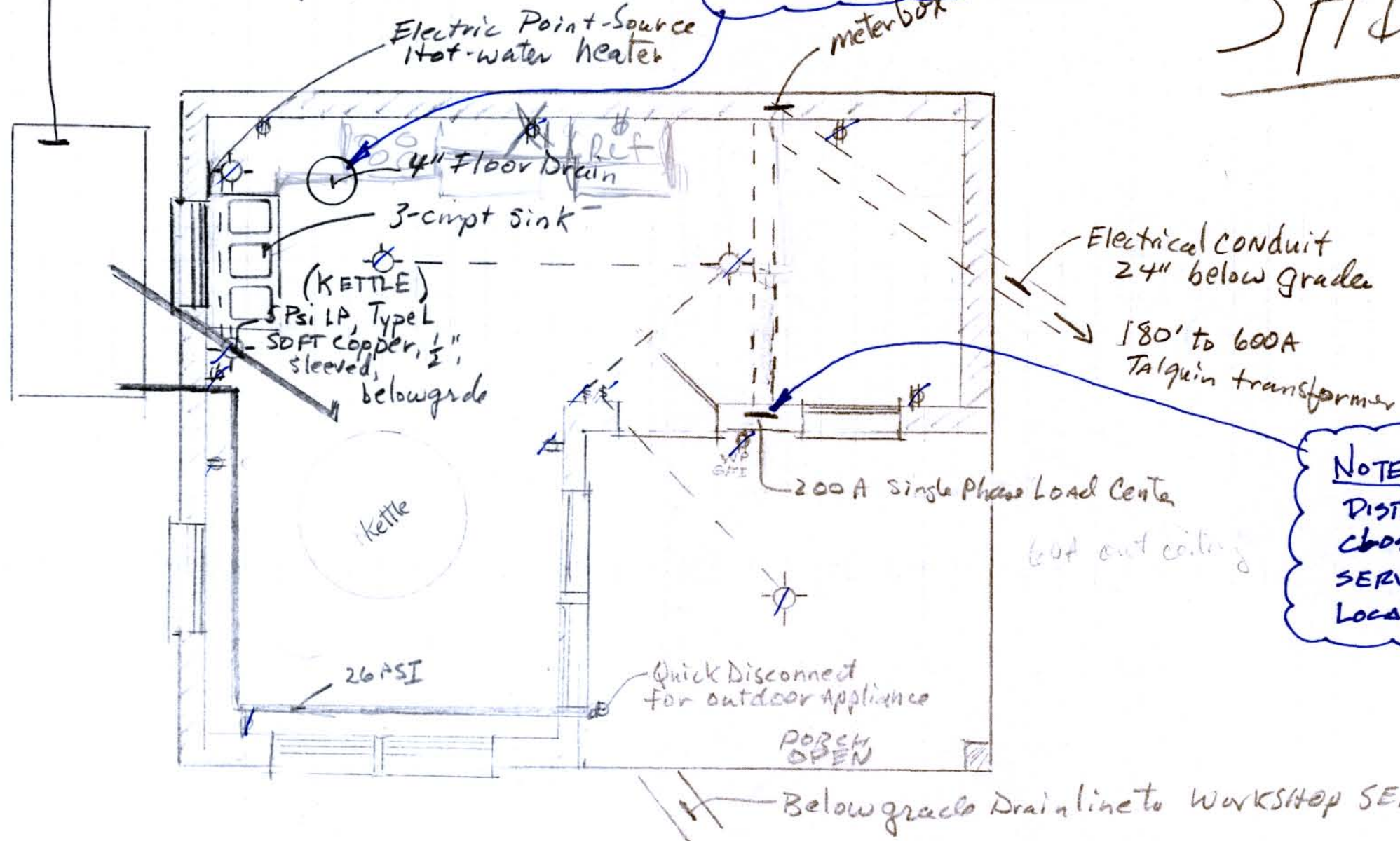
MFR: W.R. Mohr did
 final gas inspection Jan 10 2005.
 He told me I could change out
 parts & didn't need reinspection
 (changing parts = maintenance)

N.B. using deep seal
 trap made by converting
 (regular P-Trap with
 sheet elli (E&ECO))
 Jul 05 2004
 275

150 gallon LP tank
 (minimum LP @ 20°F ≥ 50 gallon
 for continuous draw-off
 of 400K BTU/hr)

PROVIDE COLD WATER/
 PRIMER TO TRAP. OR
 USE 4" DEEP
 SEAL TRAP

SHEET 3



MFR Jul 26 - talked w Mr.
 Jarral (permits) who reached
 & called back. It is OK
 to run 26 PSI under slab
 in Schedule 40 PVC elect.
 conduit.

NOTE: ~~REMOVE~~ PLACE
 DISTRIBUTION PANEL AS
 CLOSE AS POSSIBLE TO
 SERVICE ENTRANCE
 LOCATION.

FLOOR PLAN

SHOWING Electrical, GAS, PLUMBING

HOBBY SYRUP & HONEY SHOP

WILLIAM H OUTKAMP