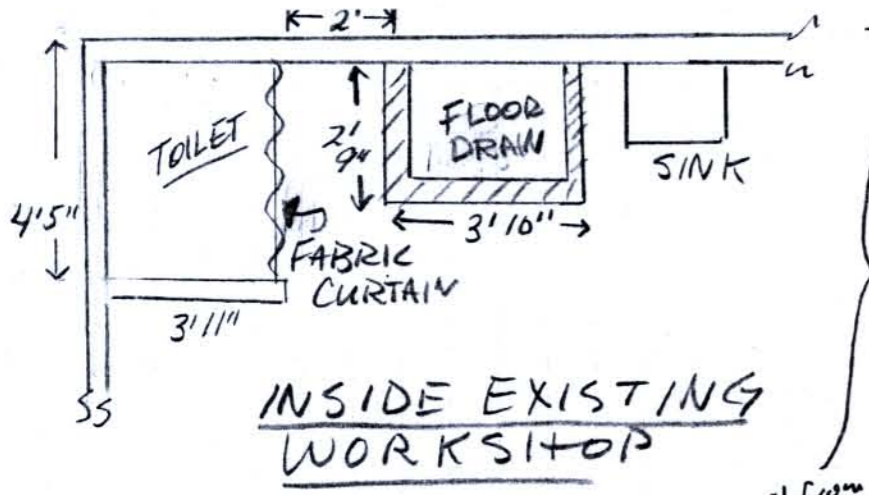


Jul 05, 2004

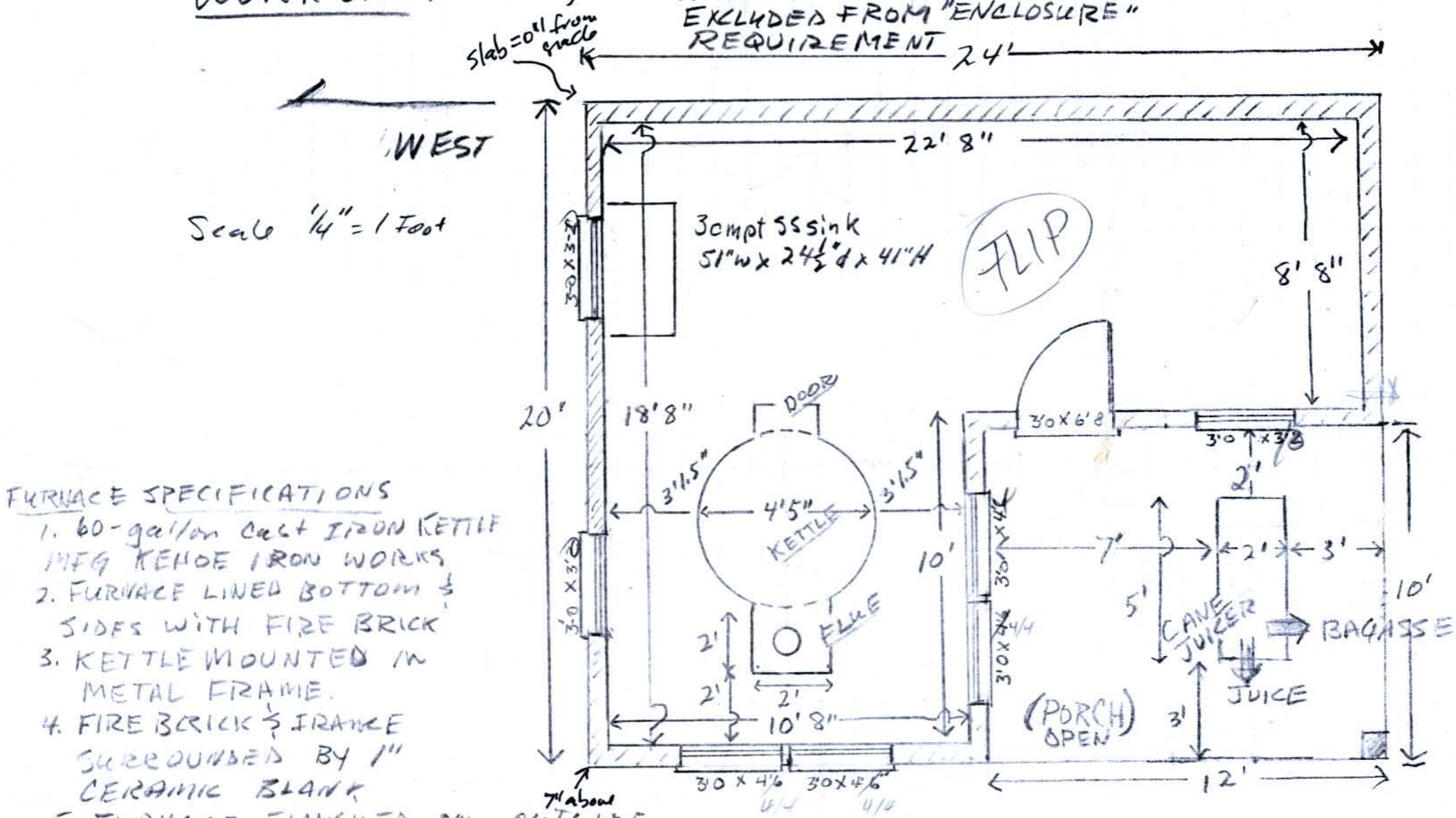


EXISTING TOILET, SINK & FACILITY FOR MOPS & OTHER CLEANING SUPPLIES (FLOOR SLOPED TO FLOOR DRAIN INSIDE 4" CONCRETE WALL)

NOTE: Headers for single window = 2x10
 " " double " " 2x12
 Space between windows = 3 1/2" (studs)

TOILET, WASH, & CLEANING SUPPLIES NOT LOCATED WITHIN FOOD PLANT THEREFORE EXCLUDED FROM "ENCLOSURE" REQUIREMENT 24'

SHEET 2



- FURNACE SPECIFICATIONS
1. 60-gallon cast IRON KETTLE MFG. KENOE IRON WORKS
 2. FURNACE LINED BOTTOM & SIDES WITH FIRE BRICK
 3. KETTLE MOUNTED IN METAL FRAME.
 4. FIRE BRICK & IRANCE SURROUNDED BY 1" CERAMIC BLANK
 5. FURNACE FINISHED ON OUTSIDE with solid BRICK
 6. FLUE, 8", double-walled, stainless steel
 7. SYSTEM TO BE SUPPLIED WITH 5 PSI PROPANE THROUGH BURIED TYPED, SOFT COPPER, NO INTERNAL THREADED CONNECTIONS
 8. BURNER TO BE MEEVER SRS with pilot light, thermocouple, Gas valve FOR AUTOMATIC

- SPECIFICATIONS OF CANE JUICER
1. Golden No. 2 (NEW MODEL) MFG. GOLDEN Machine & Foundry. ALL BEARINGS REPLACED WITH 100-GRADE (LEAD-FREE) BABBIT.
 2. OPEN DRIVE COMPONENTS TO BE LUBRICATED WITH FOOD GRADE LUBRICANT
 3. JUICE TO BE STRAINED THROUGH STAINLESS STEEL MESH AND THEN FILTERED AND COLLECTED IN STAINLESS STEEL VESSEL.

HOBBY SYRUP & HONEY SHEET
 "SOUTHERN MATTERS
 FOOD ESTABLISHMENT
 NON-PERISHABLE LIMITED
 SALES

FLOOR PLAN

SHOWING OVER DIMENSIONS, Kettle + furnace, cane juicer, sink & wash & TOILET FACILITIES IN ADJACENT

303 SQFT - ENCLOSED
 (EXEMPT FROM WIND ENGINEER'S CERTIFICATION)

William H. Outlaw