

BILL OUTLAW
850644 4020

upright detachable support - strays at 2.5, 5.5, 8.5 feet

double-walled
8" SS/galv.
flue

Kettle stand



straps provided

minimum = 10" flue

4" (expanded metal & band of rebar 4" below rim)

(FRONT)

63 cup
10 courses high
21 around
273 bricks needed

7 1/4"

9"

7 1/4"

24" expanded metal skirt

3ft long (uprights not attached to rim)
2x2 tubular steel

five brick

concrete floor

outside metal plate
inside opp. metal

6 high
14 around
84
58 flow
142 total

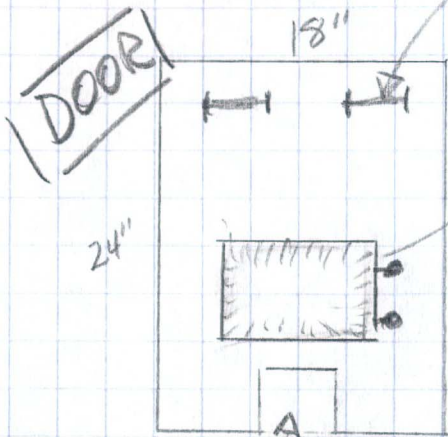
soil

concrete

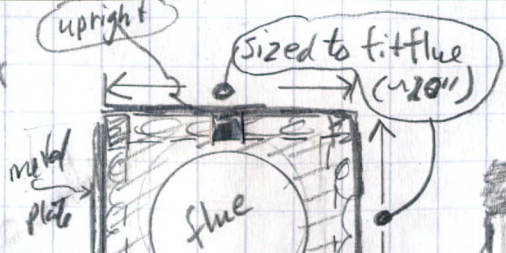
all 2x2 uprights that are directly connected to rim = 55'

NOT EXACTLY TO SCALE

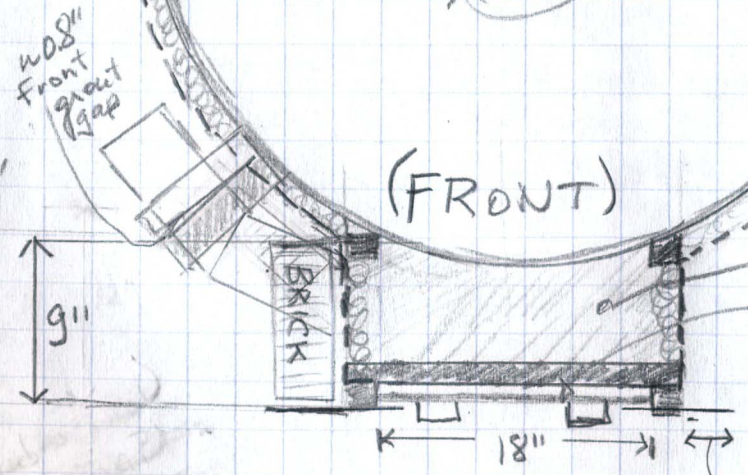
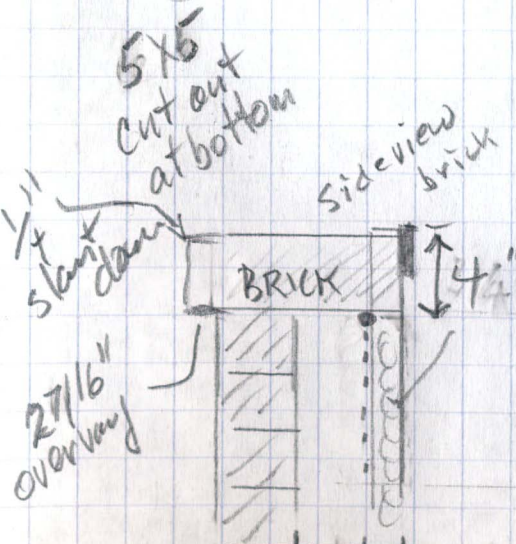
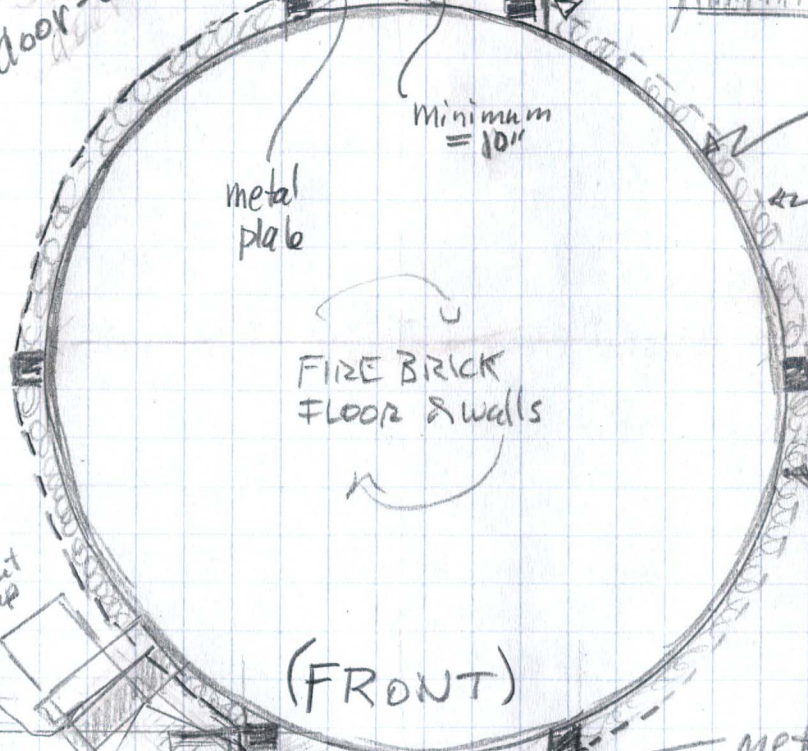
Kettle Frame
Top View



U-shaped
Nebax handles
for lifting out
"Columbus"
door - supplied



Bill Outlaw
850-644-4020



(FRONT)
44 9/16" (o.d.)
~ 43" 11/16" (i.d.)

NOT EXACTLY TO SCALE