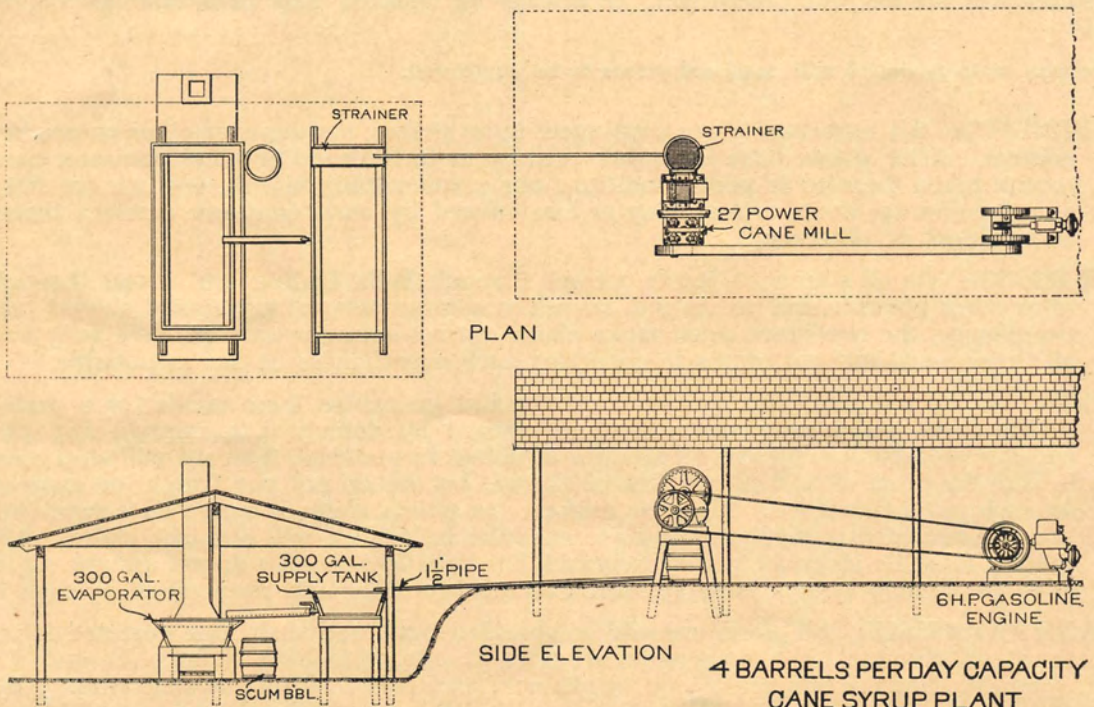




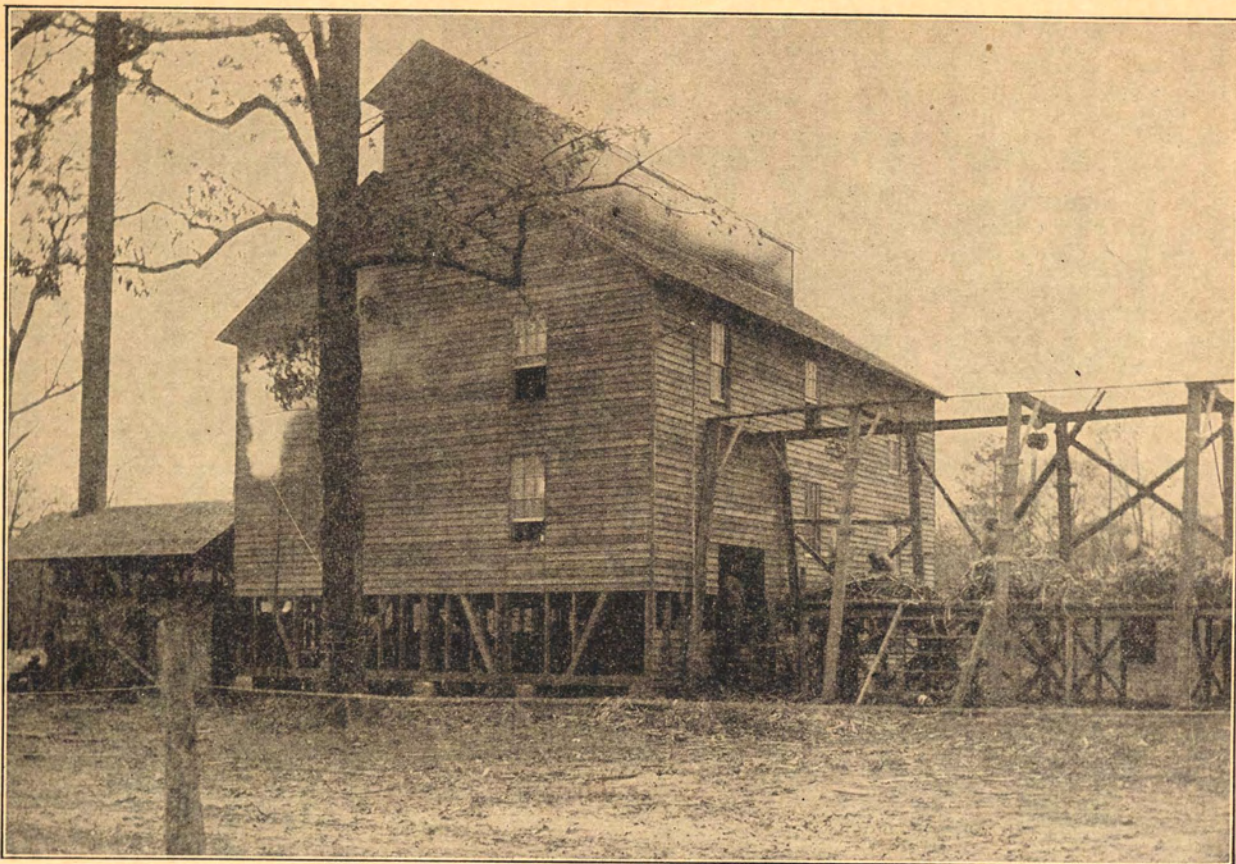
4 BARRELS PER DAY CAPACITY SYRUP PLANT—No. 27 MILL



4 BARRELS PER DAY CAPACITY CANE SYRUP PLANT

DIAGRAM SHOWING INTERIOR OF ABOVE PLANT





20 BARRELS PER DAY CAPACITY SYRUP PLANT—No. 63 Mill

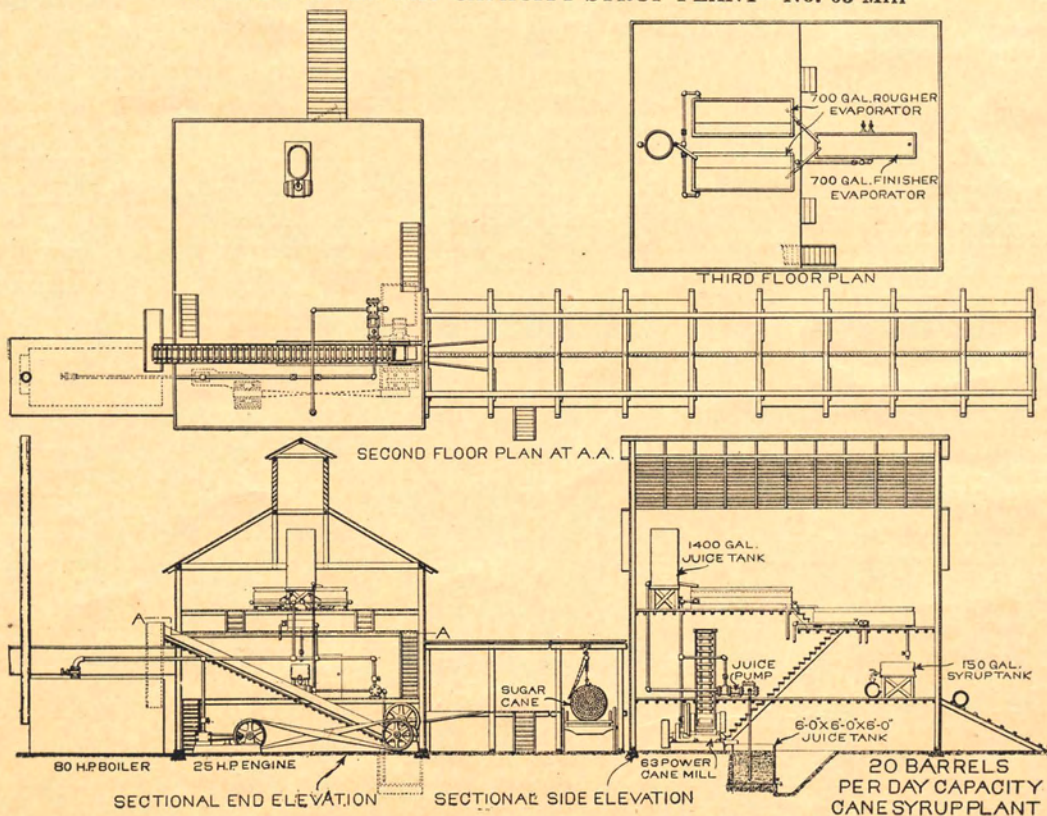


DIAGRAM SHOWING INTERIOR OF ABOVE PLANT