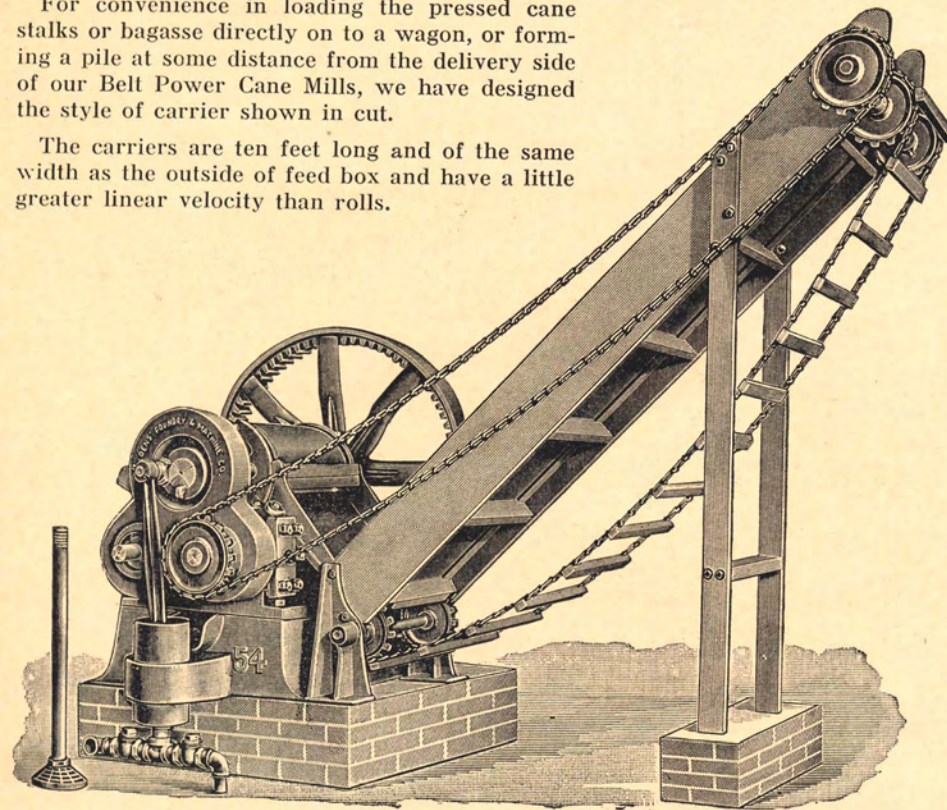


BAGASSE CARRIER

FOR BELT POWER CANE MILLS

For convenience in loading the pressed cane stalks or bagasse directly on to a wagon, or forming a pile at some distance from the delivery side of our Belt Power Cane Mills, we have designed the style of carrier shown in cut.

The carriers are ten feet long and of the same width as the outside of feed box and have a little greater linear velocity than rolls.



Our Standard No. 27 and No. 36 Mills are not made with small Roller Shaft extended for sprocket for driving Bagasse Carrier, as Mills being small we think Bagasse Carriers are not needed.

For customers wishing No. 27 or 36 Mill made special with shaft extended, we are willing to make same.

Net Prices to be Added to Price of Mill.

For extending small shaft,
No. 27 Mill\$4.50
For extending small shaft,
No. 36 Mill 5.25
Extra charge for drive sprocket if wanted.

LIST PRICES OF BAGASSE CARRIERS

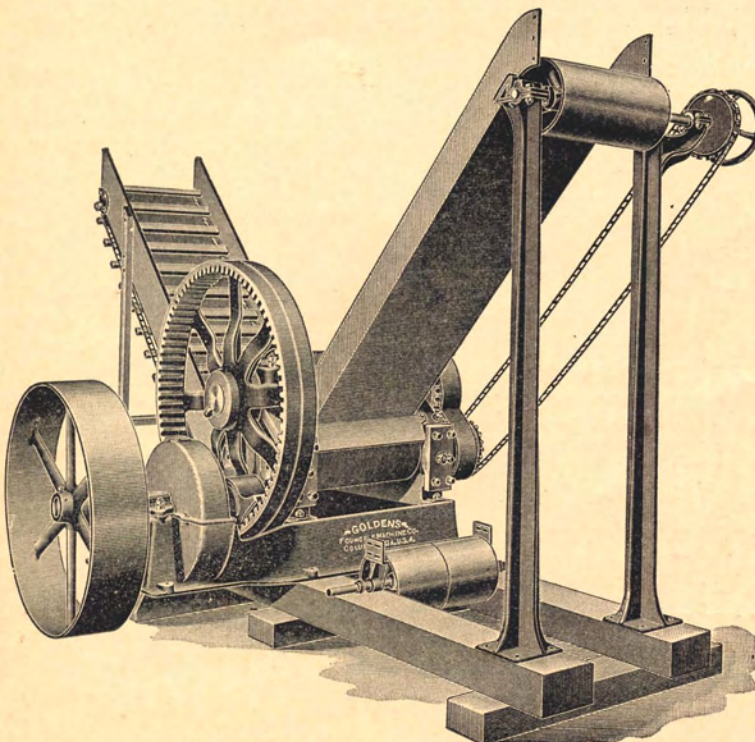
(Including driving sprocket and chain.)

10' Carrier complete for No. 27 Mill	\$135.00
10' Carrier complete for No. 36 Mill	167.00
10' Bagasse Carrier complete for No. 45 Mill....	200.00
10' Bagasse Carrier complete for No. 54 Mill....	230.00
10' Bagasse Carrier complete for No. 63 Mill....	287.00
Iron Trough Feed Carrier for No. 63 Mill as below without belt....	625.00

No. 63 MILL

Price, page 20. Price does not include Feed Carrier and Bagasse Carrier shown in cut. For Price on these see above.

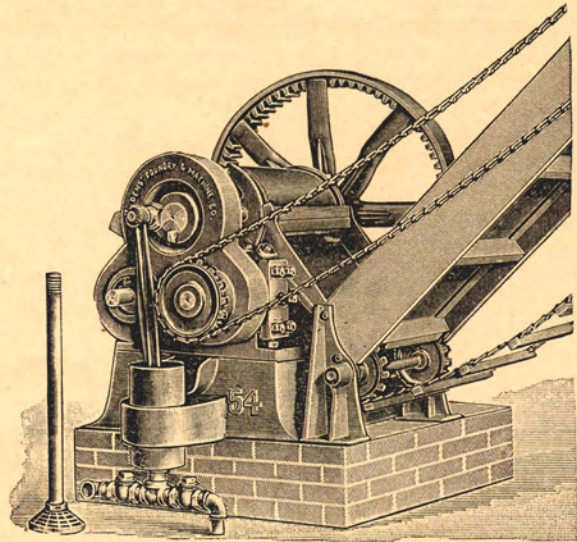
Having had calls for a larger mill than our No. 54, we have gotten up patterns for our No. 63 Mill shown on this page. This mill is made in the same way and of the same design as our Nos. 27, 36, 45 and 54, which are described on pages 18 and 21 inclusive.



Goldens' Single Acting Juice Pump, for Belt Power Cane Mills

When furnished with Mill, Pump and Mill connected as shown. Pump can be attached to old mills, by drilling 2 holes in mill base, drilling gear, and cutting gear cover and spout.

Number of Mill	Apx. Cap. Gals. Juice Per Hour	Juice Pump Fitted on Mill List Price	Weight
27.....	175.....	\$ 52.00.....	65 lbs.
36.....	225.....	68.00.....	105 lbs.
45.....	325.....	94.00.....	170 lbs.
54.....	500.....	120.00.....	220 lbs.
63.....	600.....	180.00.....	360 lbs.

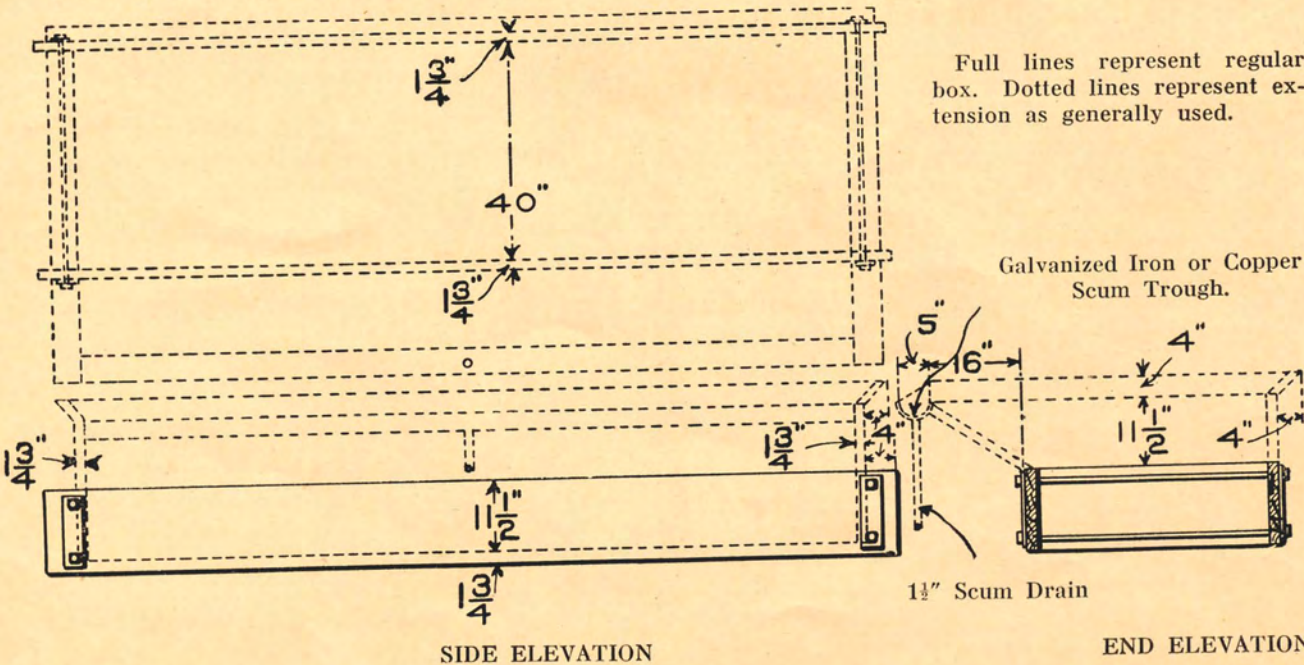


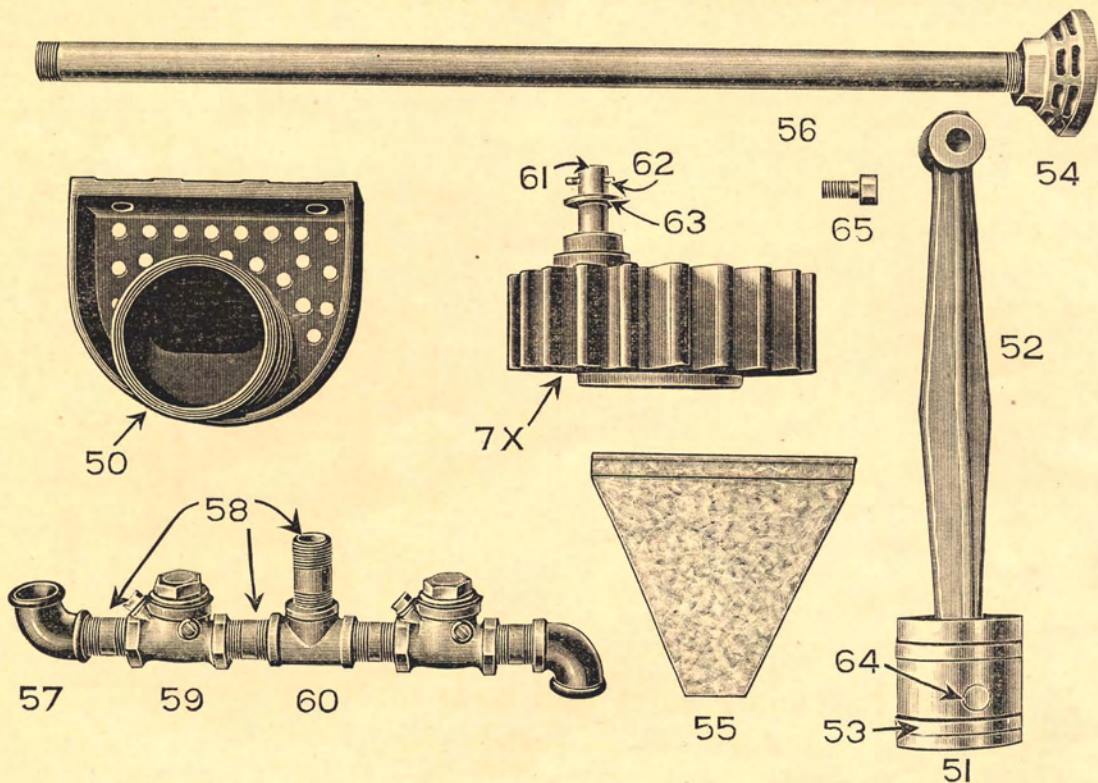
Method of Extending Sides and Ends of Steam Evaporators

In order to use our Steam Evaporators for making syrup, it is necessary to extend sides and ends of boxes, so that when juice is boiled down from 8 or 10 to 1, cubical contents, the finished product will cover the steam pipes.

Due to the fact that there is such a difference of opinion among users as to how these boxes should be built up, and also for convenience in shipping, we have decided that it is best to let each individual user build up the box that we furnish as he thinks best. As a guide, however, to those who have had no experience in this line, we show below a diagram illustrating how the sides and ends of our standard box may be built up for use.

Refer to pages 33 to 37 for detailed description and prices of Steam Evaporators.





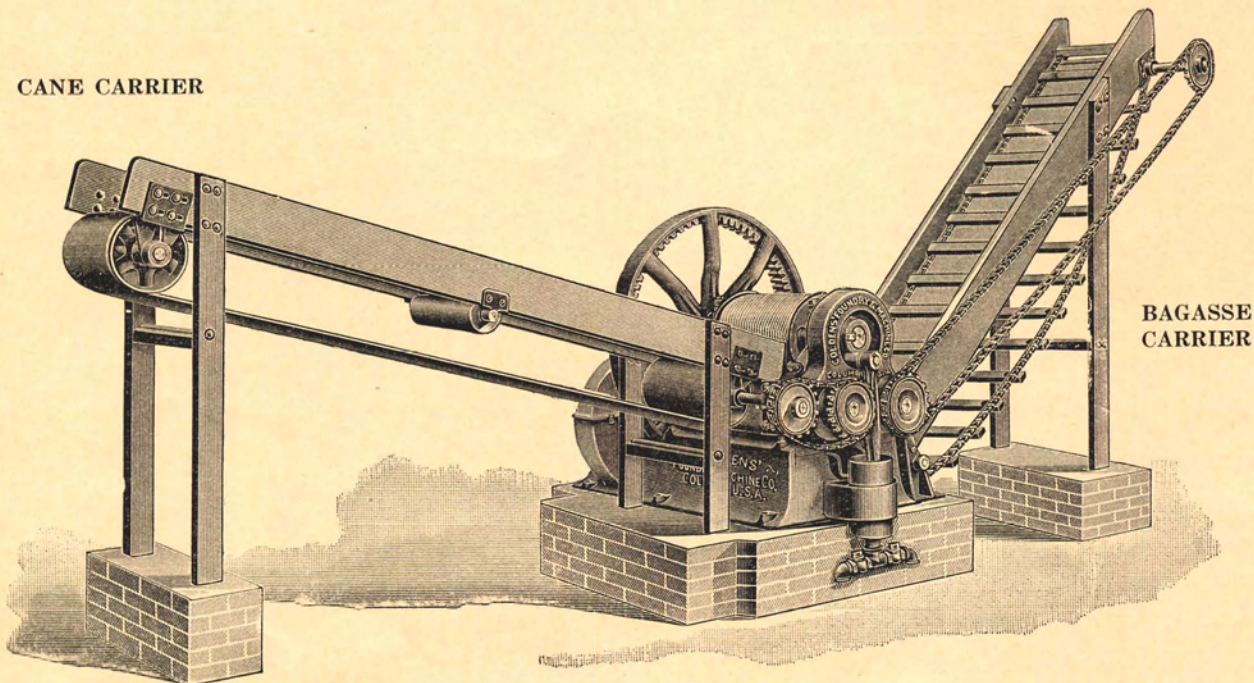
PARTS OF

Goldens' Single Acting Juice Pump, for Belt Power Cane Mills

LIST PRICE OF PARTS

Number of Cut	Name of Piece	No. 27 Pump	No. 36 Pump	No. 45 Pump	No. 54 Pump	No. 63 Pump
7X	Special Gear	\$13.50	\$19.50	\$32.00	\$52.00	\$84.00
50	Pump Cylinder	11.00	19.60	29.70	42.00	63.30
51	Piston Head	10.00	11.20	18.40	22.40	27.50
52	Connecting Rod	6.20	8.80	10.60	15.80	20.60
53	Ring, two pieces, each	2.90	3.70	4.50	5.50	6.60
54	Foot Strainer	2.00	3.00	4.00	6.00	9.00
55	Drip Plate55	.70	.85	1.10	1.30
56	Long Nipple	2.80	3.50	4.20	4.20	5.60
57	Elbow, two pieces, each20	.40	1.00	1.40	1.75
58	Short Nipple, five pieces, each40	.55	.70	.85	1.00
59	Check Valve, two pieces, each	4.20	5.60	7.60	10.70	23.80
60	Tee50	.85	1.25	1.80	2.10
61	Rod Stud	5.20	8.40	9.50	13.30	18.00
62	Cotter Pin05	.05	.05	.05	.05
63	Washer05	.06	.07	.08	.09
64	Piston Pin	2.50	2.65	3.40	3.90	4.20
65	Cap Screw, two pieces, each10	.10	.15	.15	.20

CANE CARRIER

BAGASSE
CARRIER

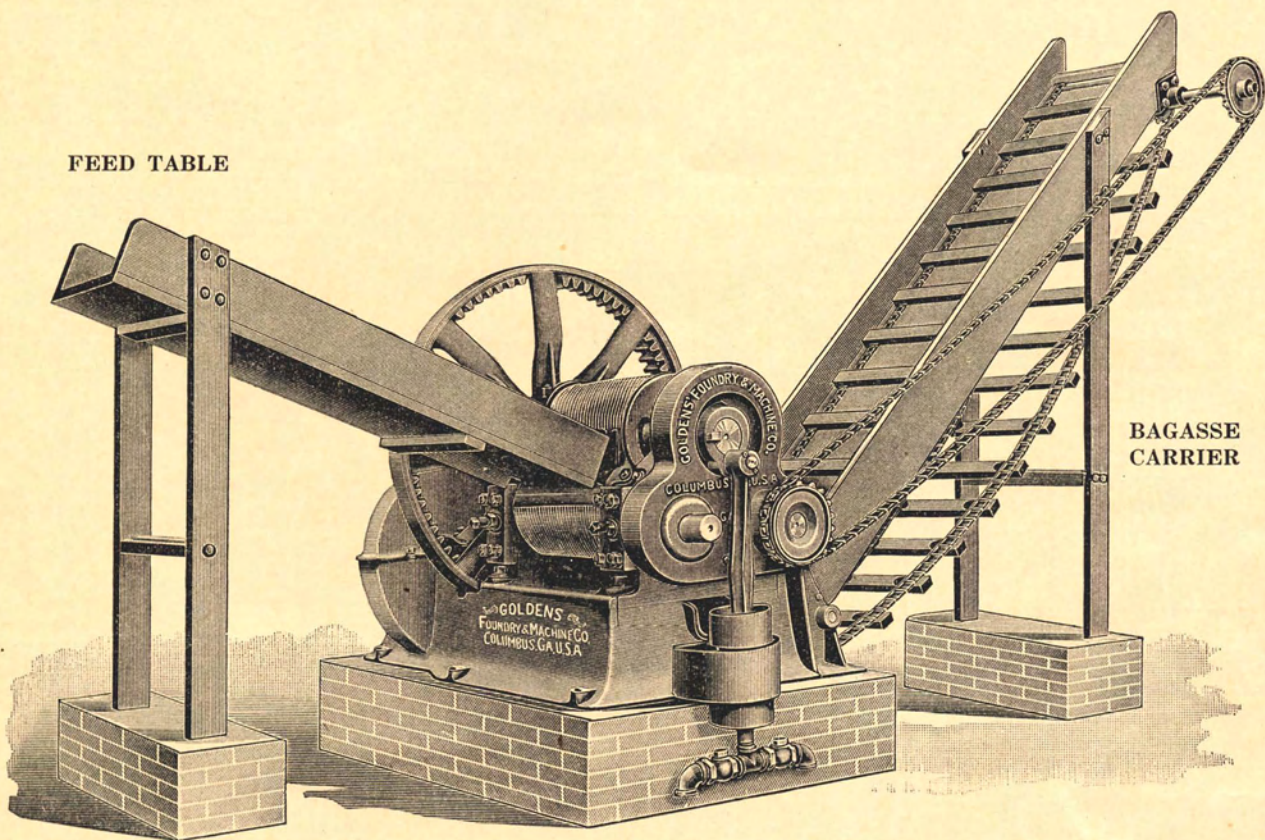
Mill Fitted With Cane Carrier, Bagasse Carrier and Juice Pump

For Prices of Mills, see page	20
For prices of Bagasse Carriers, see page	22
For prices of Juice Pumps, see pages	23-24

LIST PRICES OF CANE CARRIERS WITHOUT BELT

No. 27	\$60.00
No. 36	68.00
No. 45	76.00
No. 54	84.00
No. 63	92.00

Cane Carrier can be made Flat instead of as shown above. See diagram on page 27.



FEED TABLE

BAGASSE CARRIER

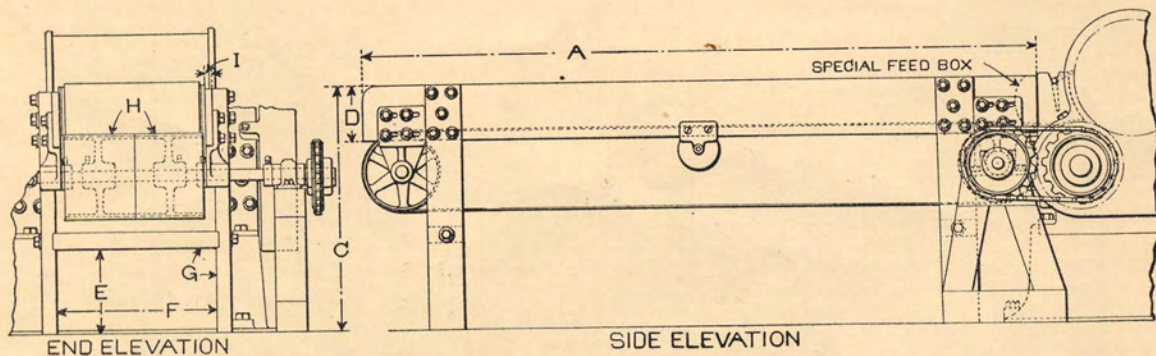
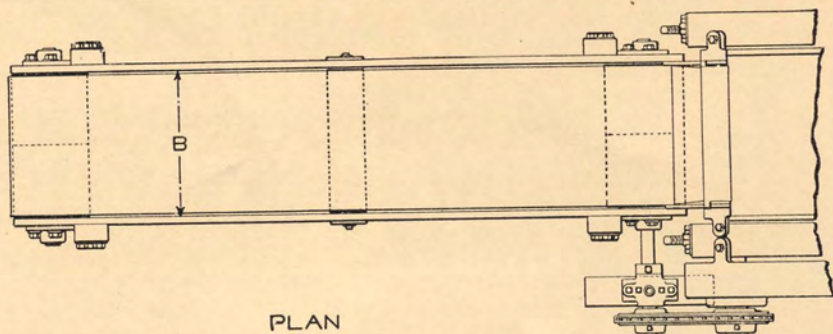
Mill Fitted With Feed Table, Bagasse Carrier and Juice Pump

For prices of Mills, see page.....	20
For prices of Bagasse Carriers, see page.....	22
For prices of Juice Pumps, see pages.....	23-24

LIST PRICES OF FEED TABLES

No. 27	\$18.00
No. 36	21.00
No. 45	24.00
No. 54	28.00
No. 63	32.00

See diagram of Feed Table on page 27.

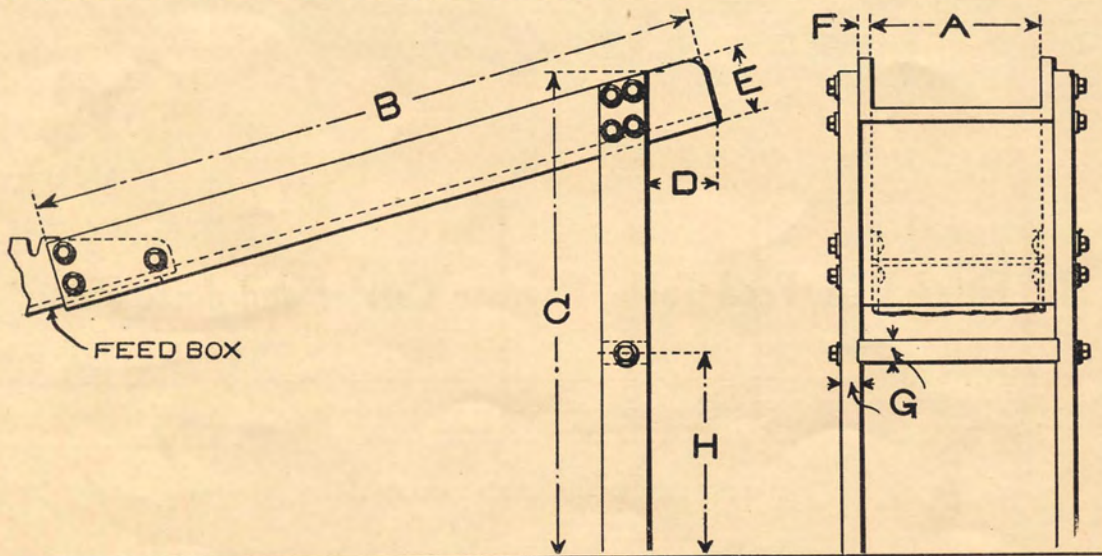


GENERAL DIMENSIONS OF POWER CANE MILL, CANE CARRIER

(Customer can build wood work, and we will furnish iron work, if desired.)

No. of Mill	A	B	C	D	E	F	G	H	I
27	10' 0"	10 $\frac{1}{2}$ "	23 $\frac{1}{2}$ "	6"	6"	13 $\frac{1}{2}$ "	1 $\frac{1}{2}$ "	1- 8 x 10 $\frac{1}{2}$ "	1 $\frac{1}{2}$ "
36	10 0	13 $\frac{1}{2}$ "	28 $\frac{1}{2}$ "	7 $\frac{1}{2}$ "	9 $\frac{1}{2}$ "	16 $\frac{3}{8}$ "	1 $\frac{3}{8}$ "	2- 8 x 6 $\frac{1}{2}$ "	1 $\frac{1}{2}$ "
45	10 0	18 $\frac{3}{8}$ "	31 $\frac{1}{2}$ "	7 $\frac{1}{2}$ "	10 $\frac{1}{2}$ "	21 $\frac{3}{8}$ "	1 $\frac{3}{8}$ "	2-10 x 9	1 $\frac{1}{2}$ "
54	10 0	24	36 $\frac{1}{2}$ "	7 $\frac{1}{2}$ "	12	26 $\frac{1}{2}$ "	1 $\frac{3}{8}$ "	2-12 x 11 $\frac{1}{2}$ "	1 $\frac{1}{2}$ "
63	10 0	29	40	7 $\frac{1}{2}$ "	15	31 $\frac{1}{2}$ "	1 $\frac{3}{8}$ "	2-12 x 14	1 $\frac{1}{2}$ "

For List Prices of Cane Carriers, Without Belt, see page 25.



GENERAL DIMENSIONS OF POWER CANE MILL, FEED TABLE

No. of Mill	A	B	C	D	E	F	G	H
27	10 $\frac{1}{8}$ "	54"	36 $\frac{1}{2}$ "	6"	5 $\frac{1}{2}$ "	1"	1 $\frac{3}{8}$ "	16"
36	13 $\frac{1}{8}$ "	57"	40 $\frac{1}{2}$ "	6 $\frac{1}{2}$ "	6	1	1 $\frac{3}{8}$ "	17 $\frac{1}{2}$ "
45	19 $\frac{1}{8}$ "	60"	49	7	7	1 $\frac{1}{2}$ "	1 $\frac{3}{8}$ "	18
54	24 $\frac{1}{8}$ "	60"	53 $\frac{1}{2}$ "	7	7 $\frac{1}{2}$ "	1 $\frac{1}{2}$ "	1 $\frac{3}{8}$ "	22
63	29 $\frac{1}{8}$ "	60"	51	7	8	1 $\frac{1}{2}$ "	1 $\frac{3}{8}$ "	22

For List Prices of Feed Tables see page 26.